

SINGLE BOARD COMPUTER

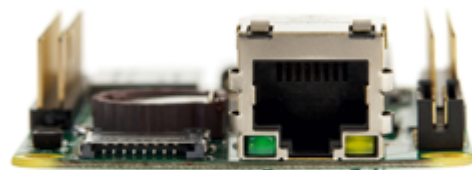
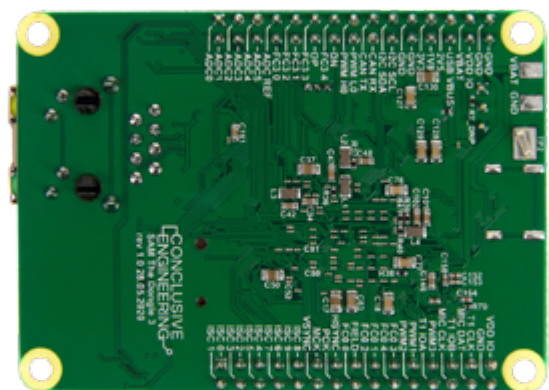
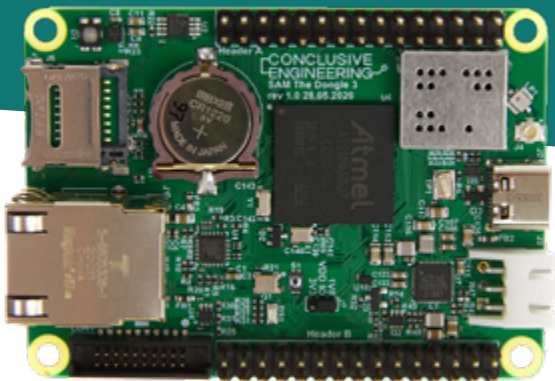
KSTR-SAMA5D27

Conclusive Engineering

The Conclusive Engineering **SAMA5D27 Development Board** is a high-performance, power-efficient development platform that supports the SAMA5D2 series embedded MPU based on the ARM Cortex-A5 processor.

The KSTR-SAMA5D27 integrates powerful peripherals for connectivity and user interface applications, and offers advanced security functions (Arm TrustZone® , tamper detection, secure data storage, secure boot, etc.), as well as high-performance crypto accelerators AES, SHA and TRNG.

Find more: <https://conclusive.pl/KSTR-SAMA5D27>






Technical details

SoC	Microchip SAMA5D27 500MHz
CPU Architecture	ARM Cortex-A5
Memory	256MB LPDDR2
Ethernet	10/100/Mbps Ethernet (RJ45)
Wireless connectivity	WiFi IEEE 802.11 b/g/n and Bluetooth v4.1 module
Mass storage	- SD card slot - 8KB EEPROM
USB	- 1x USB 2.0 OTG (USB-C) - 1x USB 2.0 Host (on expansion header)
Debug	Conclusive Developer Cable connector providing access to: - System UART - JTAG port - System I2C bus
Software support	- U-Boot - Linux 4.14-5.6 (Buildroot and Yocto) - FreeBSD 13 (on request)
Additional features	- RGB LED - Two 2x15 headers with following interfaces: 3.3V, 2.5V, 1.8V, 5.0V, VBAT power supplies 2x Flexcom (configurable: I2C, SPI, UART) I2C ADC: 6 channels + Vref 10-bits ISC (Image Sensor Controller) 4-channel PWM Timer output CAN USB
Power supply	- USB-C connector (Power Delivery support) - External Li-Ion battery (battery charging support)
Dimensions	50x70 mm



Colophon

-  conclusive.pl
-  office@conclusive.pl
-  Ligocka 103/3
40-568 Katowice, POLAND

